

HGA

MUSEUMS AND CULTURAL FACILITIES

INTERACTIVE PLACES FOR LEARNING, RESEARCH, PERFORMANCE, EXHIBIT, AND COMMUNITY



ARCHITECTURE
ENGINEERING
INTERIOR DESIGN



Boise State University Center for Visual Arts | Boise, Idaho
Cover: Walker Art Center Expansion | Minneapolis, Minnesota

CONTENTS

HGA OVERVIEW	1
SELECTED PROJECT EXAMPLES	10

“

We design for the
celebration of human life.

DICK HAMMEL
Co-Founder, HGA

CLICKABLE BUTTONS

Click shaded gray buttons throughout
brochure for links to additional resources.

HGA IS A NATIONALLY RECOGNIZED, AWARD-WINNING DESIGN FIRM

02 COTE® TOP TEN AWARDS

07 NATIONAL AIA ARCHITECTURE AWARDS

1000+ NATIONAL & REGIONAL EXCELLENCE AWARDS

5TH 2021 CULTURAL FACILITIES A/E FIRMS AS RANKED BY BD+C



Tennessee State Museum | Nashville, Tennessee

ABOUT OUR FIRM

Established in 1953, HGA is a national, award-winning firm built on the belief that impactful design results from the inspired application of original insight into the human condition. The drive for deep understanding shapes the way we collaborate and deploy the diverse resources within our firm. It's how we deliver unexpected solutions that provide added value. Ultimately, it's the way we create a legacy for our clients and ourselves.

RESEARCH

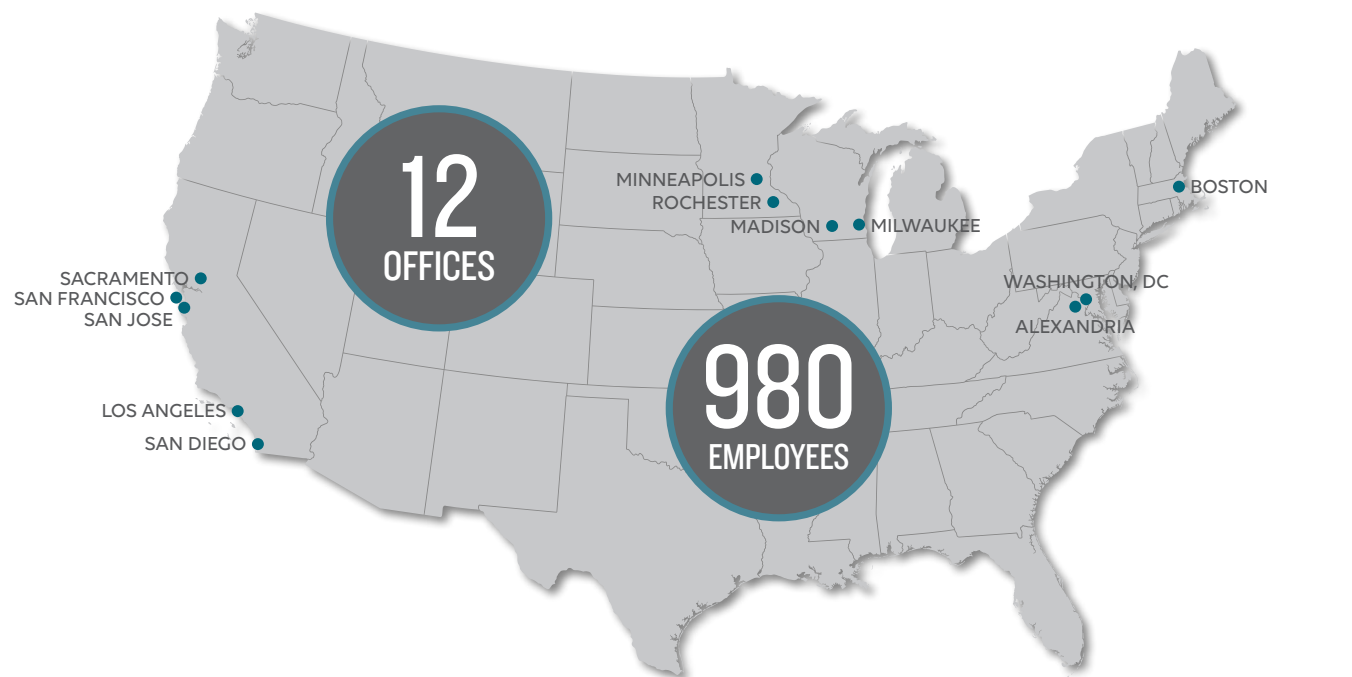
HGA has developed a robust research practice that works both independently of projects, supporting micro grant research projects to promote creative explorations, as well as being embedded into project teams. HGA has invested in 35+ research investigations including COVID effects on museum openings, health and well-being, mass timber construction and design for equity. On this foundation we help clients create purposeful design with an enduring impact.

SUSTAINABILITY

HGA is committed to designing projects that are beloved by their communities, support the health and wellbeing of their inhabitants, and reach the highest level of building performance to minimize impact on the environment while lowering long-term operational costs. We work with clients to develop performance targets, plan for resiliency, leverage technology, and consider life-cycle costs to make informed decisions.

EQUITY

As a critical component of our strategic plan, the goals of our equity work are to create an inclusive workplace where all can thrive, to increase equity in our economy through partnerships with small, underrepresented firms, and to bring an equity lens to our design work. HGA has been actively working to promote and foster a more equitable culture within our firm by hiring a new Director of Equity and working with a consultant for education, training and coaching.



- 460 ARCHITECTS
- 190 LEED APS
- 15 WELL APS
- 120 INTERIOR DESIGNERS
- 80 MECHANICAL ENGINEERS

- 65 ELECTRICAL ENGINEERS
- 45 STRUCTURAL ENGINEERS
- 06 CIVIL ENGINEERS
- 07 LANDSCAPE ARCHITECTS
- 10 DESIGN INSIGHT/RESEARCHERS

- 12 SUSTAINABILITY SPECIALISTS
- 09 SPECIFICATIONS
- 03 COST ESTIMATING
- 25 INFORMATION TECHNOLOGY
- 138 ADMINISTRATIVE

2021 National AIA Architecture Award Recipient



Walker Art Center Expansion | Minneapolis, Minnesota

[Click for more information on our museum and cultural center experience, and a video looking inside and outside a variety of featured museums in HGA's portfolio](#)

MUSEUM DESIGN SPECIALISTS

HGA's dedicated cultural design studio is a tight-knit collective of architects, designers and engineers who thrive in a highly collaborative, creative environment, rather than as individual design stars. We specialize in the evaluation, planning and design of museums, creating exceptional environments to cultivate creativity, welcome community and foster excellence in the arts. In order to bring state-of-the-art museum planning knowledge to our clients, we attend museum seminars and are members of the American Alliance of Museums (AAM). We have gone through the learning curve on many projects and bring expertise in the highly technical requirements of museum design.

Top: Harley-Davidson Museum (with Pentagram Architects) | Milwaukee, Wisconsin
Bottom left: North Dakota Heritage Center | Bismarck, North Dakota
Bottom right: Walker Art Center Expansion | Minneapolis, Minnesota



VISITOR EXPERIENCE

Museum design is constantly evolving, shifting and adapting to reach new audiences and be inclusive of every generation. Today's museums are vibrant, interactive hubs for inspiration, presentation and education. Designed with the visitor experience in mind, museums are striving to engage audiences in new and innovative ways, with interactive exhibits, creative amenities to extend the visitor's stay, flexible performance spaces and visible storage solutions to provide greater access to collections. These cultural centers are integral members of their communities, providing places to gather, celebrate and socialize.



A



B

PLANNING & DESIGN

As established leaders in the design of museums and cultural facilities, HGA has amassed a deep knowledge of museum trends and a strong reputation for responding sensitively and creatively to the needs of the industry. Because our experience spans the country, we are able to benchmark among similar institutions to help our clients understand what their peers are doing.

We provide technical expertise to execute quality design concepts with buildable, cost effective approaches and integrated engineering solutions for:

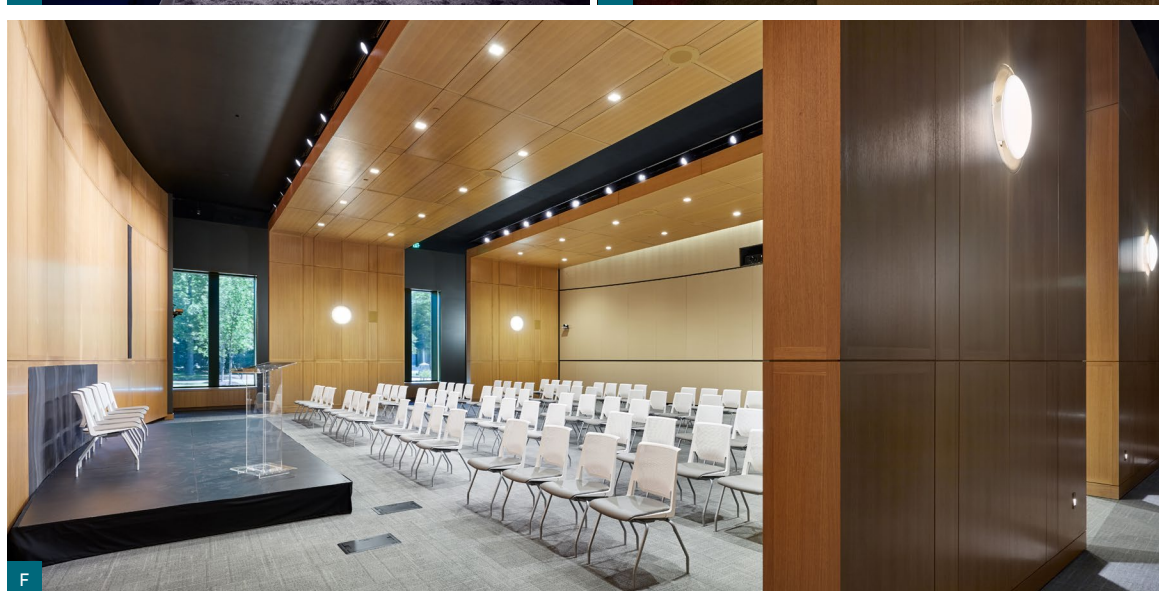


C

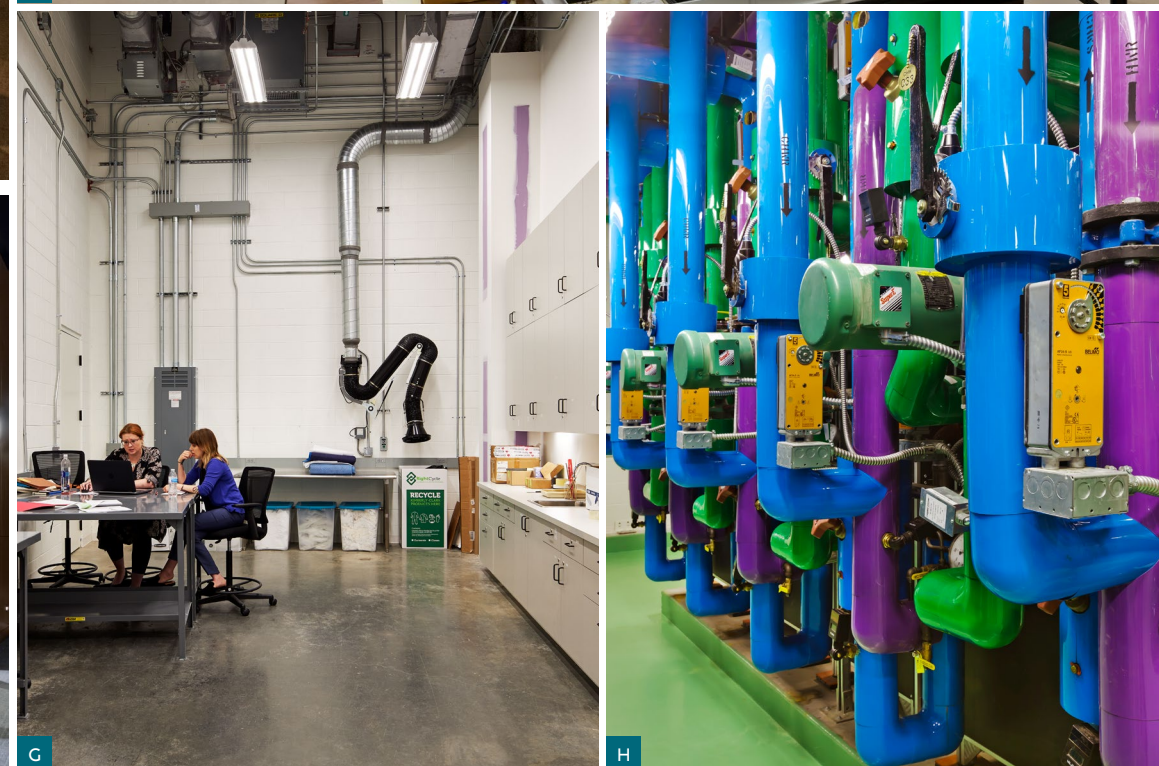
D



E



F



G

H

- A** Exterior design that reflects your objectives, whether an iconic statement to create a new identity or a contextually sensitive approach to enhance your existing environs.
- B** Visitor experience needs that include welcoming and accessible amenities for food services, retail space, special events, patron service areas, and integrated wayfinding and communication.
- C** Permanent and special exhibition spaces that provide flexible, technically advanced gallery space for a broad range of exhibits and related uses.
- D** Education/outreach amenities that engage and enrich visitors' experiences and encourage return visits.
- E** Collection protection spaces that are designed for the preservation, storage, repair, and research of objects and archives.
- F** Lecture/auditorium spaces that provide multi-use performance and gathering venues.
- G** Administrative/operations areas that provide flexible, creative and functional back of house space.
- H** Technical facility considerations such as temperature and humidity controls, air quality, power/lighting systems, fire and security systems, vibration, and acoustics, etc.



TENNESSEE STATE MUSEUM | NASHVILLE, TENNESSEE

2022 AIA Middle Tennessee Merit Award
2020 ASHRAE National Technology Award; First Place Outstanding Achievement in Design/Operation of Energy-Efficient Buildings
2020 IALD Award of Excellence (International Association of Lighting Designers)
2020 Nashville's Urban Land Institute Excellence in Development Award, Large Public Sector Project

INTEGRATED FULL-SERVICE TEAM

With over 800 architects, engineers, interior designers, planners, researchers, and strategists, we have built a network of expertise and a culture of knowledge-sharing to address the increasing complexities faced by our clients. With a history of working as an interdisciplinary practice, we have developed a truly integrated approach that yields inventive, efficient, and humane responses to the profound challenges of our time. Since our founding in 1953, HGA has grown to include 12 locations coast to coast. Our practice spans multiple markets, including corporate, cultural, education, local and federal government, healthcare, and science and technology.

ARCHITECTURE

- ADA Services
- Building Code Analysis
- Code/Regulatory Compliance
- Construction Administration
- Cost Estimating
- Existing Facilities Surveys
- GMP Compliance
- Life-Cycle Costing
- Master Planning
- Predesign
- Programming
- Space Planning
- Landscape Architecture

INTERIOR DESIGN

- Programming
- Master Planning
- Space Planning
- Furniture Design, Selection, and Specification
- Site Evaluations
- Finishes and Materials
- Signage and Wayfinding
- Environmental Graphics and Branding

ENGINEERING

- Civil Engineering
- Electrical Engineering
- Industrial Engineering
- Mechanical Engineering
- Structural Engineering

SUSTAINABILITY

- User Experience
- Net Zero Energy
- Carbon Neutral
- Zero Water
- Zero Waste
- Holistic Best Life Cycle Value

RESEARCH AND TESTING

- Commissioning
- Process Improvement
- Design Anthropology
- Benchmarking
- Data Analytics
- Building Optimization
- Infrastructure Optimization

LIGHTING DESIGN

- Specialty Lighting
- Daylighting Analysis
- Custom Luminaires
- Lighting Controls
- Computer Modeling
- Lighting Calculations
- Maintenance Manuals

TECHNOLOGY

- Virtual Reality
- Telecommunications Design
- Audio/Video Design
- Security, Fire and Life Safety
- Intelligent Buildings



Macalester College Janet Wallace Fine Arts Center | St. Paul, Minnesota

“

The renovation of this dark 1960s building into something that’s more open and transparent is really beautiful. I like the way the red terracotta plays off the brick and becomes something that’s really modern.

AIA MINNESOTA HONOR AWARDS JURY

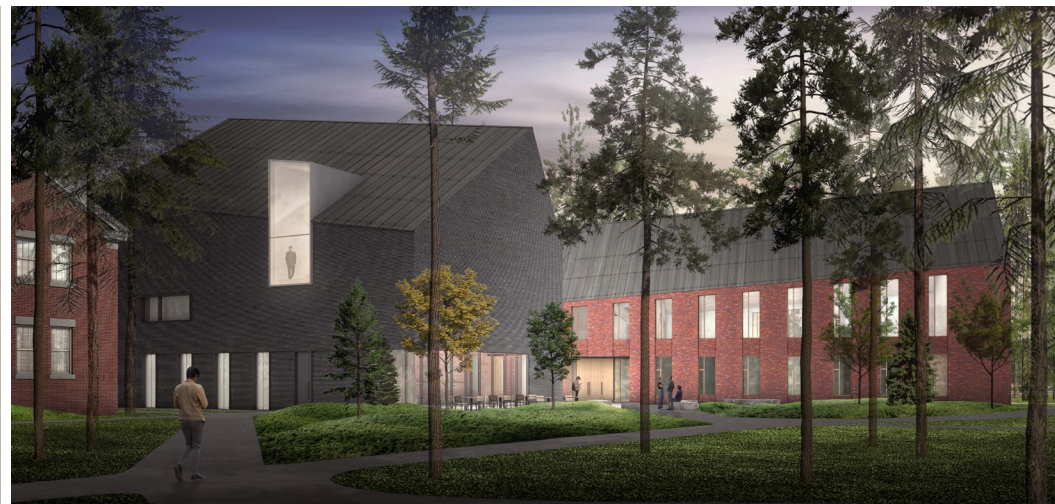
SELECTED EXPERIENCE

Spanning nearly 70 years and hundreds of diverse locations nationwide, HGA’s portfolio includes iconic, award-winning facilities that adapt to evolving needs while staying true to their institutional missions. As national experts in planning and design, we bring a client-driven collaborative process to every effort.

ARCTIC MUSEUM & CLASSROOM BUILDING | BOWDOIN COLLEGE | BRUNSWICK, MAINE

"We recognized it was a bit of a risk engaging a full-service architectural firm from Minnesota for our project in Maine. However, any concerns quickly dissolved, as HGA efficiently managed the various factions involved in the project. The sense of team was never more evident."

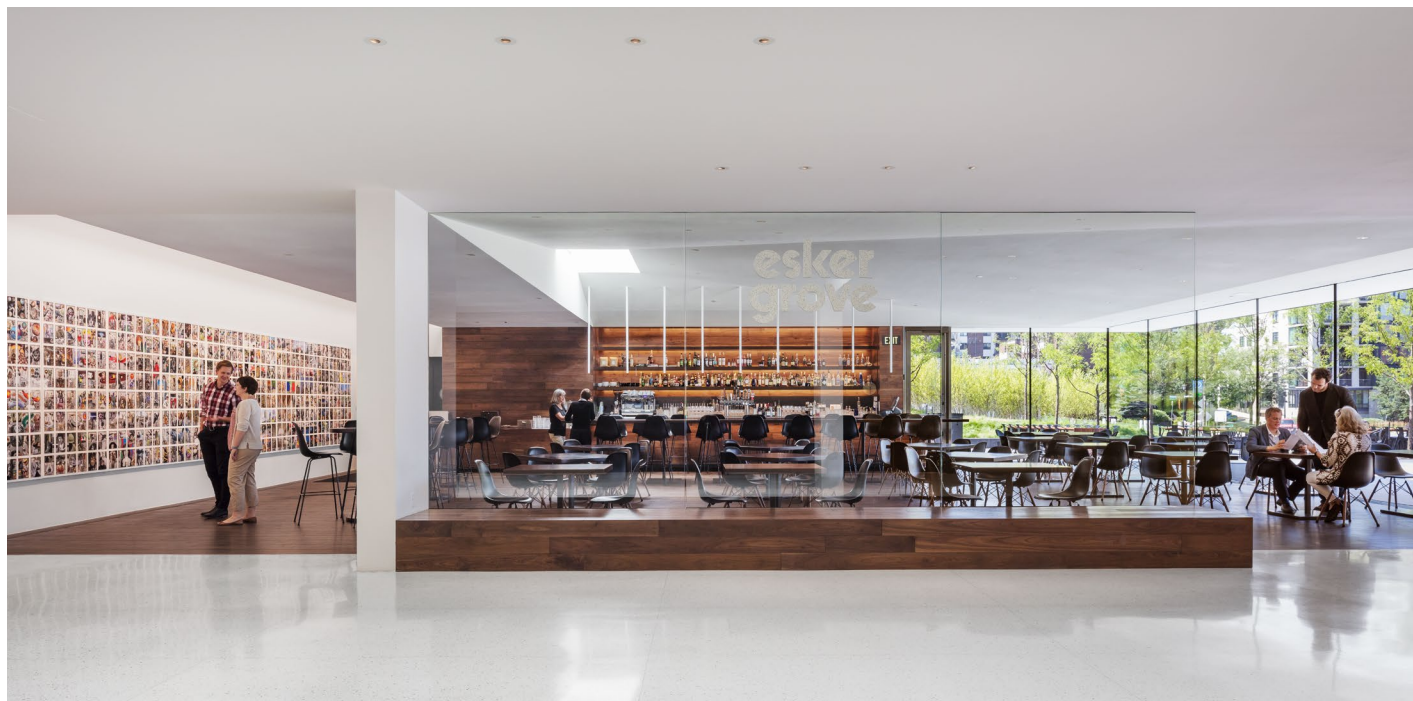
Donald Borkowski, Director of Capital Projects at Bowdoin College



WALKER ART CENTER EXPANSION | MINNEAPOLIS, MINNESOTA

"It's designed for individual exploration, but it's also designed for a great degree of programmatic flexibility. We're returning the building to the landscape and completing the vision for the whole campus."

Olga Viso, Former Executive Director, Walker Art Center



“The Museum is a stunning cultural achievement, demonstrating the State’s commitment to preserving the heritage and legacy of Tennesseans.”

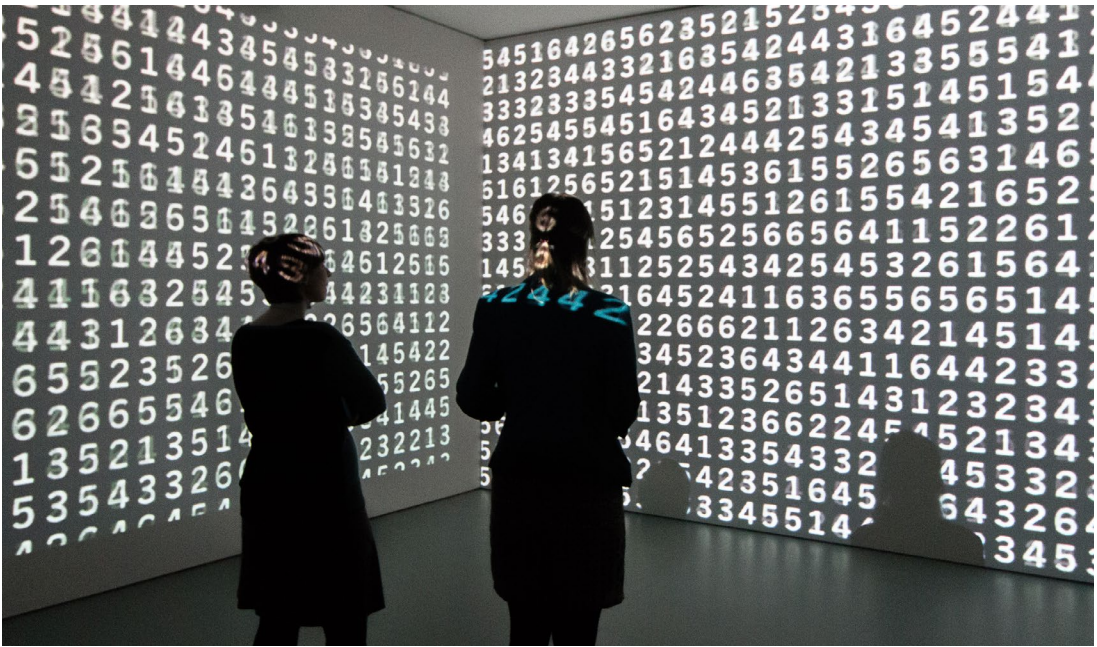
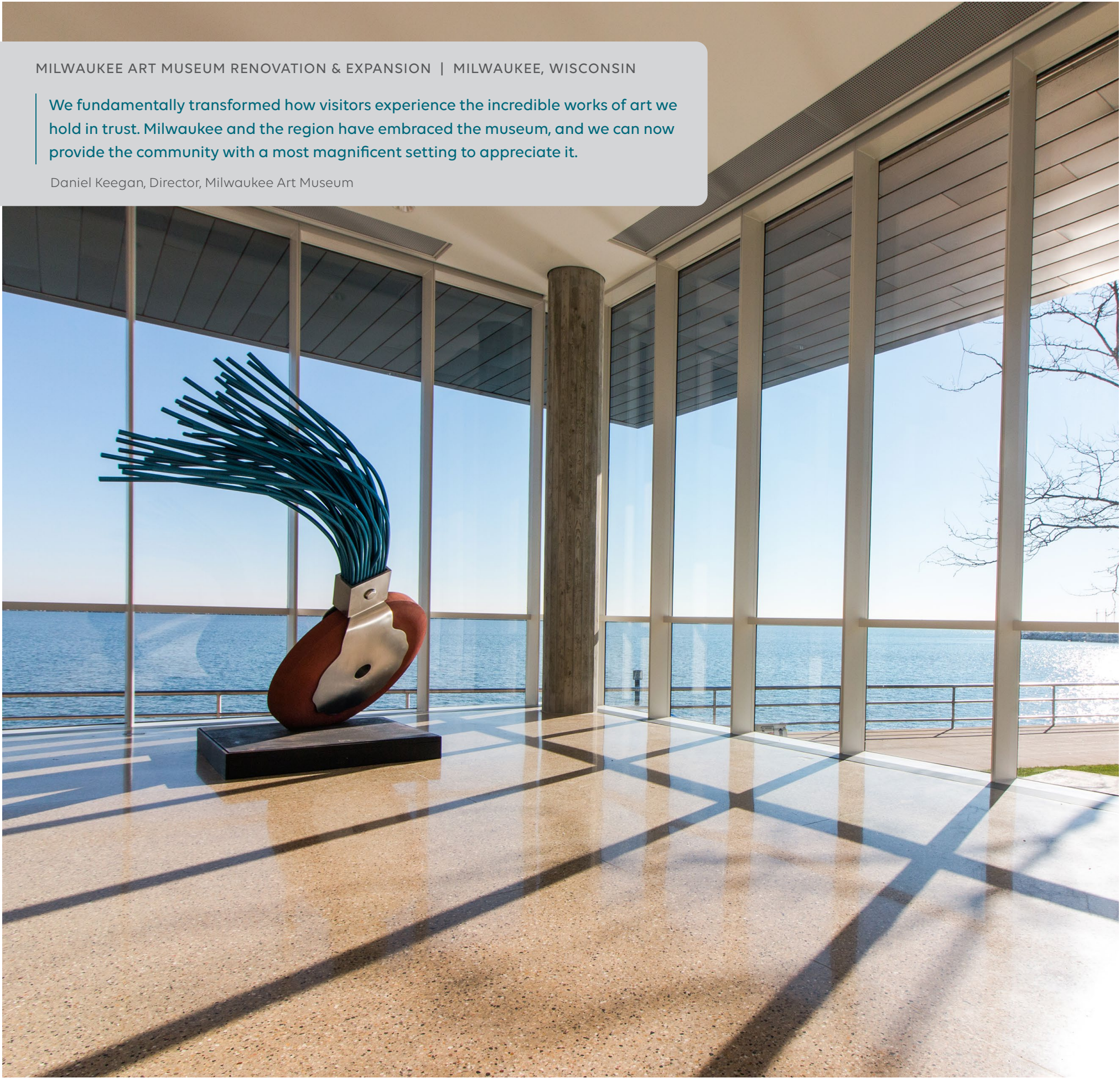
Maria Piacente, Vice President of Exhibitions, Lord Cultural Resource



MILWAUKEE ART MUSEUM RENOVATION & EXPANSION | MILWAUKEE, WISCONSIN

We fundamentally transformed how visitors experience the incredible works of art we hold in trust. Milwaukee and the region have embraced the museum, and we can now provide the community with a most magnificent setting to appreciate it.

Daniel Keegan, Director, Milwaukee Art Museum



AMERICAN SWEDISH INSTITUTE NELSON CULTURAL CENTER | MINNEAPOLIS, MINNESOTA

"We selected HGA because of their great talent and their expressed passion for creating something very special for us that carefully complements the architectural landmark status of the Turnblad mansion."

Bruce Karstadt, President/CEO, American Swedish Institute



JACKSON HOLE HISTORICAL SOCIETY MUSEUM | JACKSON, WYOMING

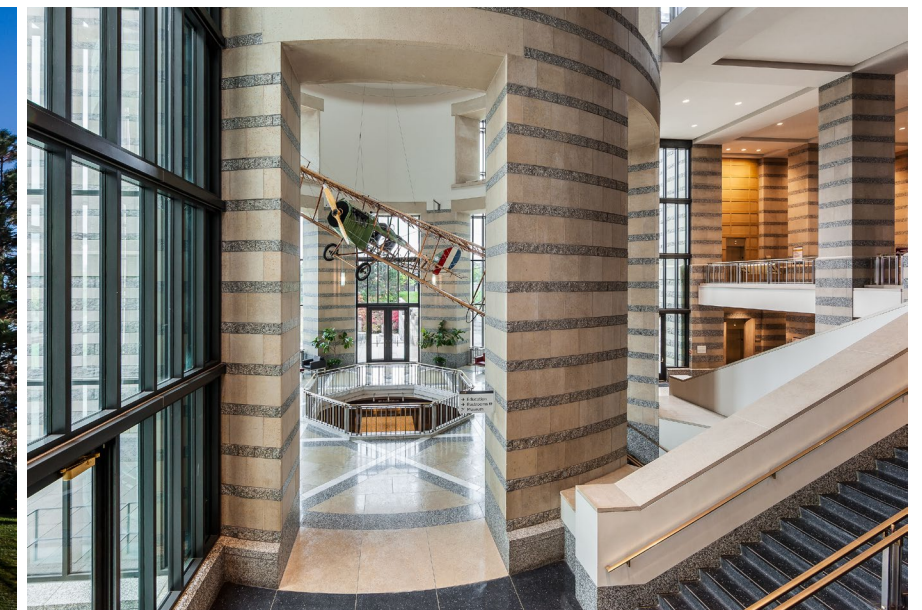
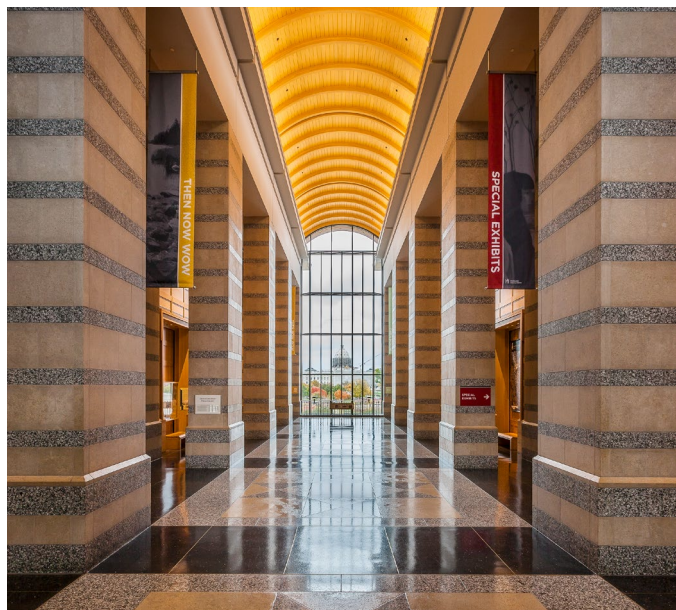
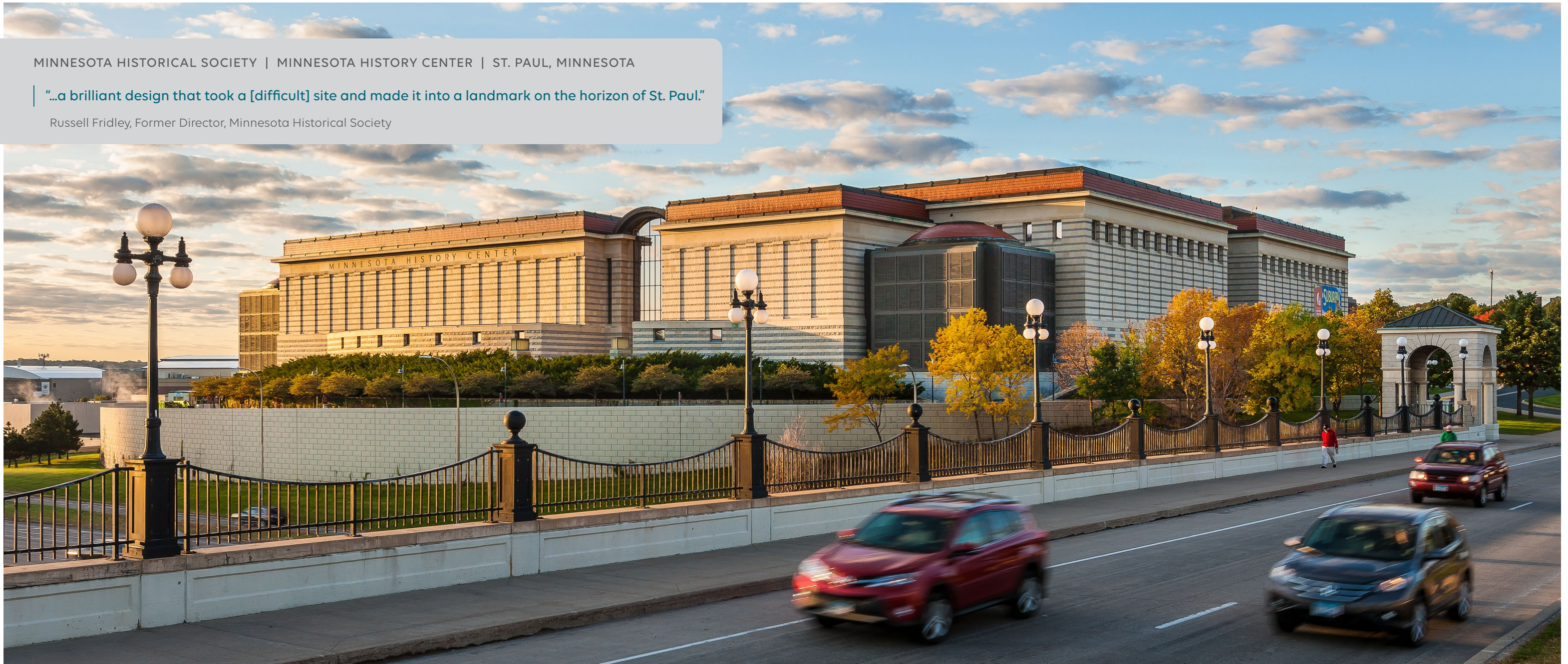
Using our fully integrated team, HGA is designing a new 13,200-square-foot home for this history museum. Situated within a prominent, historic downtown block, the campus will include a new museum with exhibition, visitor services, classroom, archives, support spaces, two historic cabins, and 2,500 square feet of outdoor space.



MINNESOTA HISTORICAL SOCIETY | MINNESOTA HISTORY CENTER | ST. PAUL, MINNESOTA

“...a brilliant design that took a [difficult] site and made it into a landmark on the horizon of St. Paul.”

Russell Fridley, Former Director, Minnesota Historical Society





WORKING TOGETHER

Working with HGA becomes a partnership grounded in collaboration, trust, and communication. Along the way we strive to learn more about you than you perhaps even know yourself, as we dive deep into the essential elements of your institution's mission, goals and hopes. We ask essential questions at the right time and listen profoundly to your answers. We earn the right to challenge you. Usually, there is a lot of fun to be had along the way. And ultimately, HGA will deliver a project that works, lasts and inspires.

100+ COMPLETED CULTURAL & MUSEUM PROJECTS

MUSEUM CLIENTS

- African American Museum and Cultural Center
Prince George's County, MD
- American Swedish Institute | Minneapolis, MN
- Arctic Museum | Bowdoin College | Brunswick, ME
- California African American Museum | Executive Architect | Los Angeles, CA
- California Museum for History, Women, and the Arts | Sacramento, CA
- California State Railroad Museum
Sacramento, CA
- Carnegie Science Center OMNIMAX Theater
Pittsburgh, PA
- Children's Museum of Cheyenne | Cheyenne, WY
- Commonwealth of Pennsylvania State Archives
Harrisburg, PA
- Como Park | St. Paul, MN
- Da Vinci Science Center | Allentown, PA
- Discovery World | Milwaukee, WI
- Dubuque Museum of Art | Dubuque, IA
- Five Civilized Tribes | Tulsa, OK
- Gateway to Science | Bismarck, ND
- Great Lakes Aquarium | Duluth, MN
- Gulf Coast Exploreum Science Center | Mobile, AL
- Haas Fine Arts Center | University of Wisconsin-Eau Claire | Eau Claire, WI
- Haggerty Museum of Art | Marquette University
Milwaukee, WI
- Harley Davidson Museum | Executive Architect
Milwaukee, WI
- Hiller Aviation Museum | San Carlos, CA
- Historic Fort Snelling | St. Paul, MN
- Jackson Hole Historical Society Museum
Jackson, WY
- Marbles Kids Museum | Raleigh, NC
- Milwaukee Art Museum | Milwaukee, WI
- Milwaukee Public Museum | Milwaukee, WI
- Minneapolis Institute of Arts | Minneapolis, MN
- Minnesota History Center | St. Paul, MN
- Minnesota Military and Veterans Museum
Little Falls, MN
- Minnesota Museum of American Art | St. Paul, MN
- Minnesota Zoological Garden | Apple Valley, MN
- Muscogee (Creek) Nation Museum, Cultural Center
and Archives Building | Okmulgee, OK
- Museum of Science and History | Fort Worth, TX
- Museum of Science and Industry Henry Crown
Space Center | Chicago, IL
- Museum of Science Mugar OMNIMAX Theater
Boston, MA
- Museum of the North | University of Alaska
Fairbanks, AK
- Museum of Wisconsin Art | West Bend, WI
- North Dakota Heritage Center State Museum and
Archives | Bismarck, ND
- Oneida Nation Museum and Cultural Center
Green Bay, WI
- Oregon Museum of Science and Industry OMNIMAX
Theater | Portland, OR
- Pennsylvania Military Museum | Boalsburg, PA
- Rochester Art Center | Rochester, MN
- Rochester Children's Museum | Rochester, MN
- Santa Cruz Museum of Art and History
Santa Cruz, CA
- Saint Louis Art Museum | St. Louis, MO
- Science Museum of Minnesota OMNIMAX Theater
St. Paul, MN
- Smithsonian Institution Discovery Center National
Museum of Natural History | Washington, DC
- State of Iowa Historical Building | Des Moines, IA
- State of Minnesota State Capitol | St. Paul, MN
- Tennessee State Museum | Nashville, Tennessee
- Walker Art Center | Executive Architect
Minneapolis, MN
- Weisman Art Museum (WAM) Expansion |
University of Minnesota | Executive Architect
Minneapolis, MN
- Winona County History Center | Winona, MN
- Women of the West Museum | Boulder, CO



American Swedish Institute
Nelson Cultural Center | Minneapolis, Minnesota

HGA

Discover more at hga.com

CONTACT
Amy Braford Whittey, National Arts Business Development
612.758.4333 | abrafordwhittey@hga.com

